



For more info, visit [www.toyotalandcruiser.in](http://www.toyotalandcruiser.in) or call Toll Free 1800-425-0001

Log on to [interact.mobi](http://interact.mobi) from your mobile browser to download the intARact application.  
Point your phone camera at the Toyota logo, click & experience the New Land Cruiser.

Is your Land Cruiser dealer

 **TOYOTA**  
*Quality Revolution*

**THE PRIDE OF  
THE WORLD**

**NEW  
LAND CRUISER**





## 50+ Years of Glory: The Legend Takes a Major Step Forward

The legendary Land Cruiser, a truly dominant 4WD vehicle, has been routinely taming the wildest terrains on earth for over 50 years. In the process, it has become an essential part of the lives of a wide variety of people around the world. The legend continues with the Land Cruiser, the natural successor to the line and a continuing symbol of strength and reliability. And like its forebears, the king of 4WD is fully aware of its responsibility to do no harm to Mother Earth: **The Pride of the World.**



1951-1960



1955-1959



1960-1984



1967-1980



1980-1989



1989-1998



1998-2007





FOLLOW THE  
'LAND CRUISER WAY'  
TO 4WD  
SUPREMACY







## Assertion of Individuality

With the Land Cruiser,  
what you see is precisely what you get.  
The boldly stylish front-end firmly  
establishes this 4WD's steadfast,  
regal presence.





## Heart of Dignity

A ride in Land Cruiser speaks volumes of stability and power. The ease and comfort of driving is remarkably redefined in a Land Cruiser. On the threshold of power, performance and luxury, Land Cruiser becomes the manifestation of your pride.





## A Symbol of Built-in Strength and Trust

Frame and body merge in an unequalled synergy of strength. The resulting union of rugged durability, rigid strength, and ride stability is unique among full-size 4WDs, forming the foundation and ensuring the continuity of the Land Cruiser legend.

### Body Structure

---



*Expanded use of high-tensile-strength steel realises a lightweight yet strong body*



*Rust-resistant steel sheeting helps prevent body corrosion and deterioration*

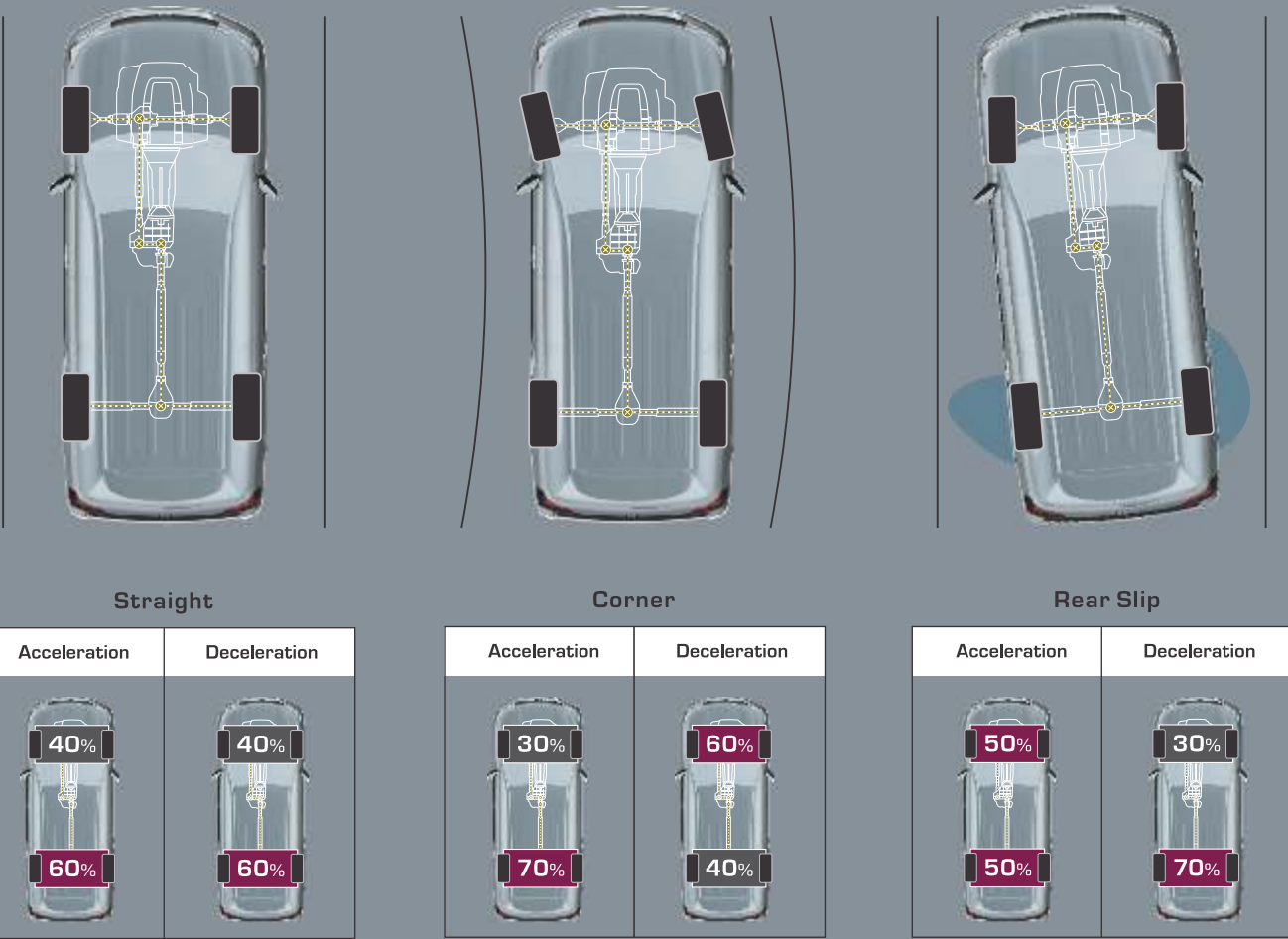


All-terrain  
Performance  
Defines  
“King of 4WD”

Proven in the world's  
most gruelling driving conditions,  
Land Cruiser's advanced  
technologies let you explore with  
confidence and satisfaction  
that no other vehicle can match.

Full-time 4WD System

*TORSEN® LSD in the centre differential instantly optimises front/rear torque distribution, regardless of whether it is straight path, corner or slippery surface, effectively maintaining vehicle stability in a wide variety of driving conditions. TORSEN® LSD is a registered trademark of JTEKT Corporation.*



*Identical front /rear-wheel rotation*

Multi-terrain ABS

*Multi-terrain ABS continually monitors engine revolutions and vehicle speed, instantly adjusting wheel-slippage regardless of surface conditions. Stability is achieved in both on and off-road driving.*





## Crawl Control System

Even on muddy or rocky surfaces requiring sensitive pedal control, this new system automatically manages both engine and brakes, maintaining a constant low speed and freeing the driver to concentrate on what's ahead. The system minimises wheel-lock and spin, enhancing vehicle stability and the capability to escape from tight spots.

Brake pedal and accelerator are automatically controlled \_\_\_\_\_



## Toyota Electronic Modulated Suspension (TEMS)

Toyota Electronic Modulated Suspension closely controls the damping force of the shock absorbers to provide a stable body position and smooth ride comfort. The auto-levelling function on the electronically controlled rear air suspension ensures the vehicle height stays constant despite changes in car load. The vehicle automatically returns to the normal position once driving speed exceeds 12kmph on low and 50kmph in high modes.

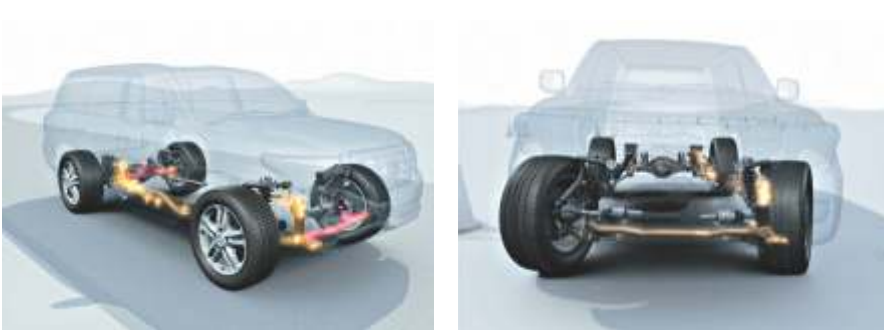
## Hill-start Assist Control

Hill-start Assist Control contributes to smooth hill starts by automatically applying brake pressure to help hold the vehicle whenever rollback is detected.

Escaping from tight spots \_\_\_\_\_



On-road driving \_\_\_\_\_



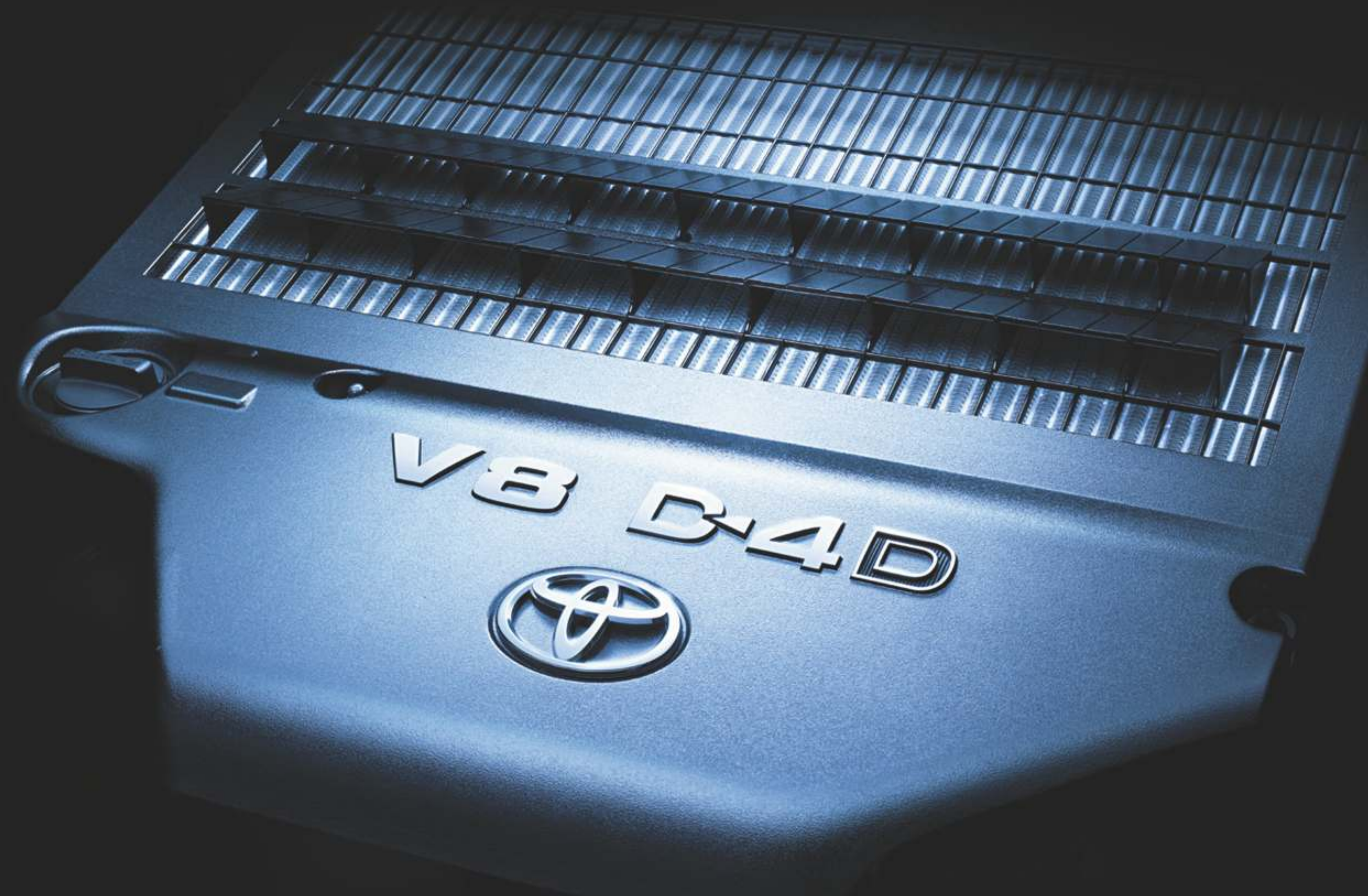
Without  
Hill-start Assist Control

With  
Hill-start Assist Control

Land Cruiser's exceptional all-terrain capability realises a smooth and comfortable driving experience.





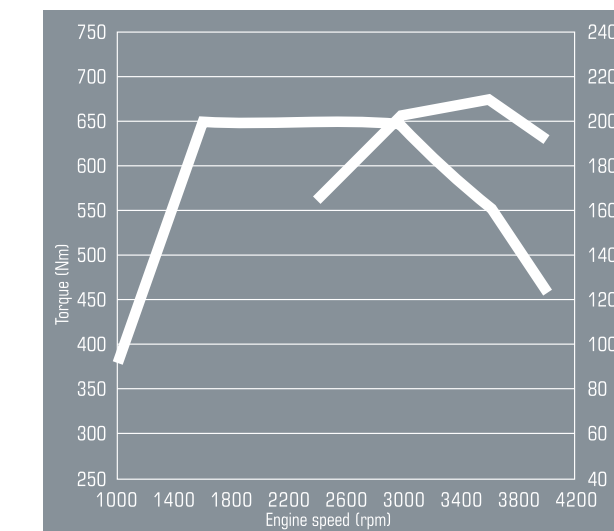


## A Boundless Source of Pure Energy

Harness the engine power with a specially developed transmission and the world's most advanced 4WD system. All with minimal impact on the environment.

### 4.5L V8 Diesel Engine 1VD-FTV

*Toyota's first common-rail V8 also debuts a new twin-turbo system that delivers strong power while reducing fuel consumption as well as emissions.*



### 6-speed Automatic

*The newly developed 6-speed Super ECT's sequential shift control allows the driver to choose the shift range, delivering the driving control of a manual transmission.*







## Total Control is at Your Command

That distinct sense of authority that pervades the spacious cockpit of the Land Cruiser is a product of the expansive design that seamlessly blends high quality and user-friendly functionality.

It is a feeling of complete and absolute control, and is supported by a combination of advanced features:

- DVD, 14-speaker JBL audio system with EMV screen
- Cruise control
- Push start/stop keyless system
- Steering wheel with audio, voice, and telephone controls
- Tilt and telescopic steering
- Optitron meters
- Multi Information Display (MID)
- Shift lever and knob with faux wood and leather
- Front seat air conditioning
- Seat heaters for front and 2nd row seats
- Manual airbag with on/off switch for front seat passenger
- Power driver seat with memory function and power passenger seats

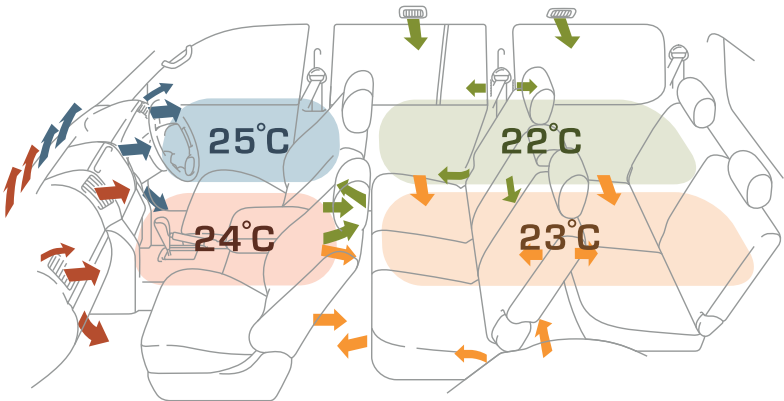
These elements ensure your complete command over the Land Cruiser.





## You Deserve the Best

Expansive space and exceptional quality are exclusive features of the Land Cruiser cabin. All occupants benefit equally, sharing in the comfort and savouring the satisfaction. The Land Cruiser sets new 4WD standards in cabin comfort, with the world's most advanced air conditioning system and genuinely comfortable, easily configurable seating throughout.



### 4-zone Air Conditioning

*The world's most advanced air conditioning system features 4-zone front / rear / right / left independent temperature control, while up to 28 outlets ensure a comfortable cabin environment for all occupants in all driving conditions.*

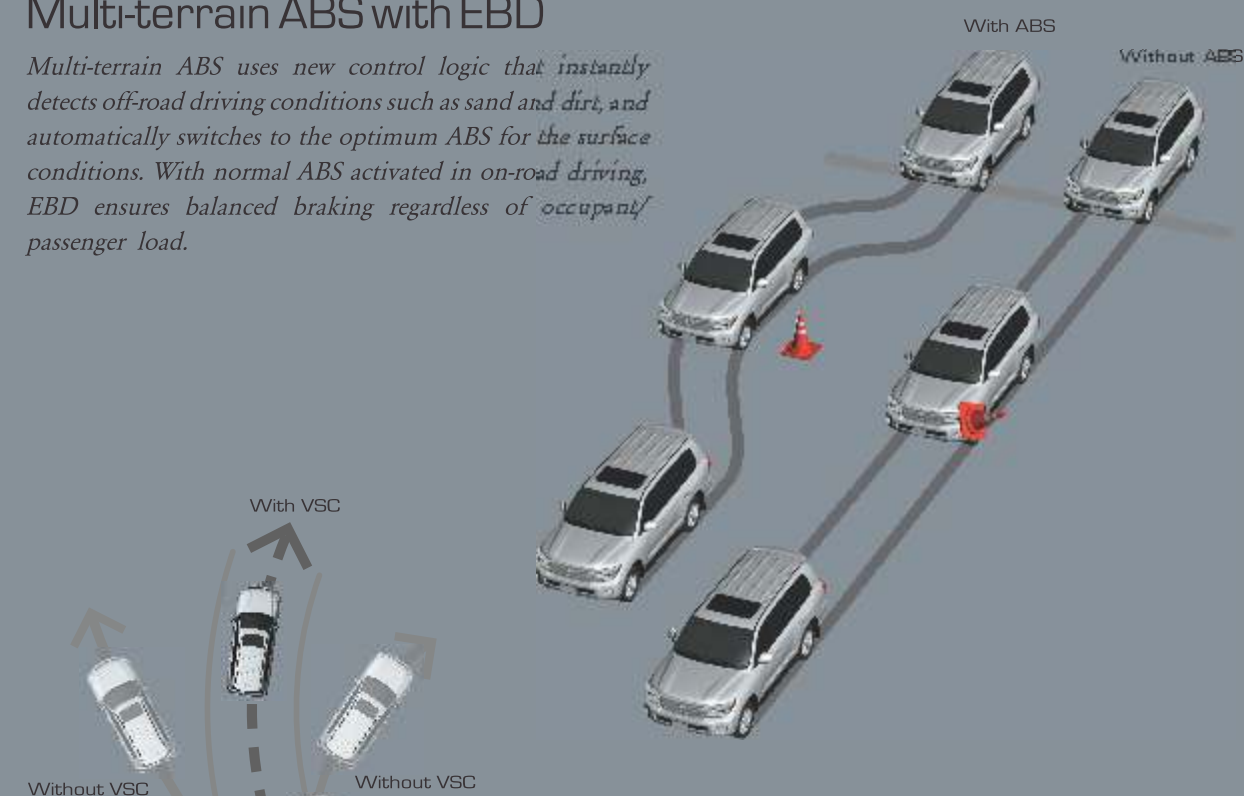


## Innovative yet Fundamental- the Spirit of Safety

Occupant safety in the Land Cruiser is first-rate and comprehensive, with innovative technologies that assure relaxation, confidence and peace of mind.

### Multi-terrain ABS with EBD

Multi-terrain ABS uses new control logic that instantly detects off-road driving conditions such as sand and dirt, and automatically switches to the optimum ABS for the surface conditions. With normal ABS activated in on-road driving, EBD ensures balanced braking regardless of occupant/passenger load.



### Vehicle Stability Control

Vehicle Stability Control detects lateral skidding during cornering, and automatically controls engine output as well as braking force on each tyre, helping the driver to maintain control.



### Ten SRS Airbags

Best-in-class collision protection for cabin occupant comprises Supplemental Restraint System dual-stage driver airbag/front passenger airbag, along with knee airbags for the driver and front-seat passenger, and SRS side and curtain-shield airbags for 1<sup>st</sup> and 2<sup>nd</sup> row outer-seat occupants. The front passenger seat is equipped with passenger detection system.



Front combination lamps enhance driver visibility and add to the front-end styling.



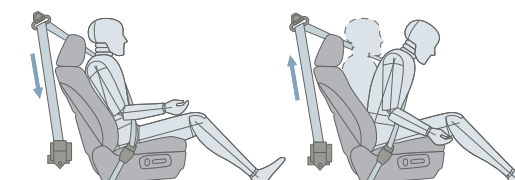
Rear combination lamps, LED-type tail and stop lamps are highly visible to the drivers behind.



LED high-mount stop lamp brilliantly alerts drivers behind to impending stops.



An impact-absorbing front hood/fender/cowl structure helps reduce impact on pedestrians.



Front seatbelts have pretensioners and 2-stage force-limiters, and 2<sup>nd</sup> row outer-seatbelts have pretensioners.



# Perfection is in the Details

Nothing's been forgotten, inside or out, optimising convenience and comfort for all concerned. This is how the legend will continue to grow through the Land Cruiser.



*Start/stop button makes starting and stopping of the engine a breeze*



*Smart Key eases entry to and exit from the vehicle*



*Efficient cooler box keeps your beverages refreshing, even on long trips*



*Power moonroof\* adds to interior spaciousness*



*Large, newly designed Optitron meter's ideal positioning enhances visibility*



*Essential vehicle data is readily available on the multi-information display*



*Illuminated vanity mirrors in driver's and front passenger's sun visors enhance convenience*



*Overhead console allows easiness of storage and access to small items*



*Door trims feature a bottle and a pocket for A4-size documents*

## Seat Configuration



*2<sup>nd</sup> row split 60:40 seats expand access space, making it easy to enter and exit the rear.*



*Seat-slide mechanism expands leg room for 2<sup>nd</sup> and 3<sup>rd</sup> row passengers.*



*2<sup>nd</sup> row seats tumble and 3<sup>rd</sup> row seats fold laterally to maximise luggage space.*

## Back Guide & Multi Terrain Monitor



*A total of four cameras, each mounted on the rear, under both ORVMs and in the front, guide you in maneuvering different terrains and in parking as well.*

## Audio System



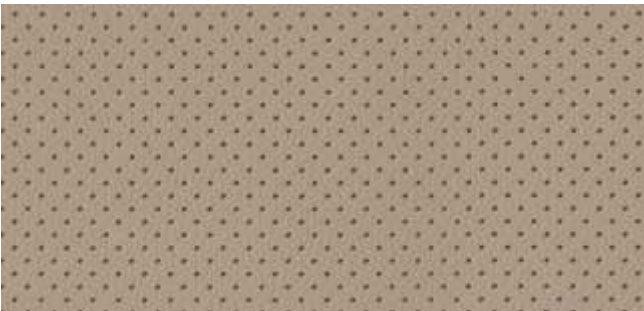
*A premium quality audio system with EMV screen featuring DVD player with 14 JBL speakers for an out-of-the-world audio experience.*

*\* Optional*

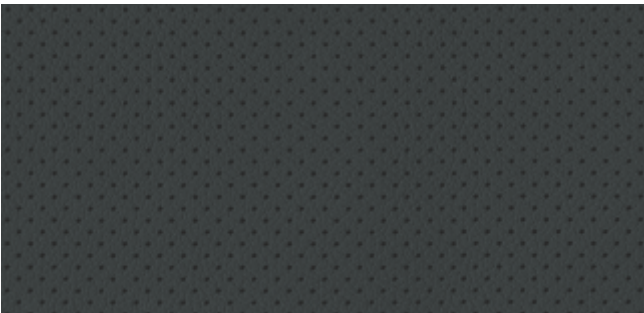


SPECIFICATIONS				
			VX	
			4.5-litre Diesel Engine (1VD-FTV)	
Transmission			6-speed Automatic	
DIMENSIONS & WEIGHT				
Overall length		mm	4950	
Overall width		mm	1970	
Overall height		mm	1865	
Wheelbase		mm	2850	
Tread	Front	mm	1640	
	Rear	mm	1635	
Ground clearance		mm	225	
Kerb weight		Kg	2725-2740	
Gross vehicle weight		Kg	3350	
CHASSIS				
Suspension	Front	Double wishbone		With TEMS Technology
	Rear	Four link with Air Spring		
Brakes	Front/Rear		Ventilated Discs	
Minimum turning radius (tyre)		m	5.9	
Fuel tank capacity		litres	93	
Tyres		285/60 R18		
ENGINE			4.5-litre Diesel Engine	
Type			V8, 32-valve DOHC	
Displacement		cc	4461	
Max. output (SAE net)		kW/rpm	195/3400	
Max. torque (SAE net)		Nm/rpm	650/1600-2600	
Fuel system			Common Rail-type	

INTERIOR COLOURS



Shell



Black

EXTERIOR COLOURS



White Pearl Crystal Shine



Silver Metallic



Super White II



Green Mica Metallic



Dark Red Mica Metallic



Grey Metallic



Attitude Black



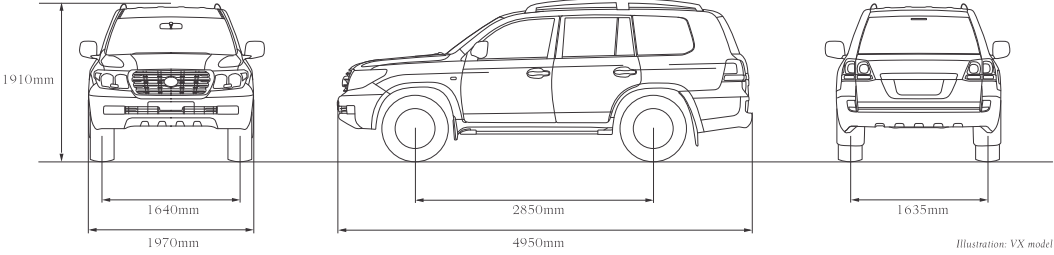
Light Blue Metallic



Beige Mica Metallic



Black



- Addition of extra features may change figures in this chart.
  - TKM reserves the right to alter any details of specifications and equipment without notice.
  - Details of specifications and equipment are also subject to change to suit local conditions and requirements.
  - Note: Vehicle pictured and specifications detailed in this catalogue may vary from models and equipments available in your area.
  - Vehicle body colour might differ slightly from the printed photos in this catalogue.
- \*Please inquire at your local dealer for details of any such changes that might be required for your area.*